

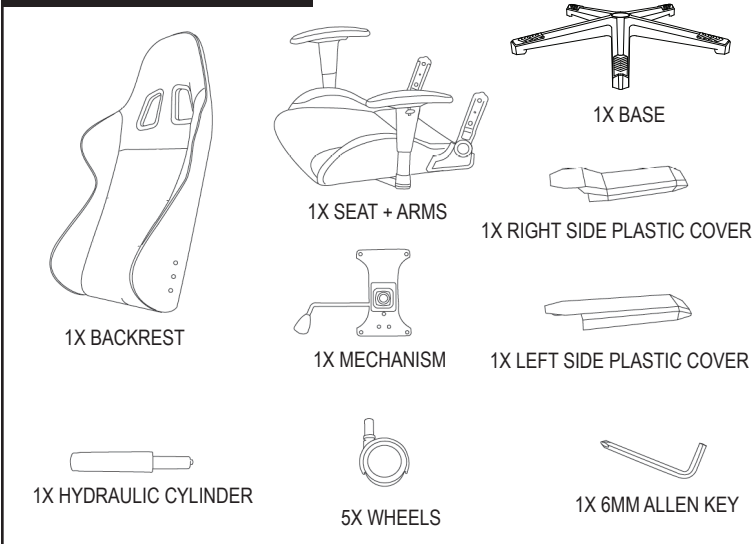
IMPORTANT UPDATE!

ALPHA SERIES INSTRUCTIONS

 [LEVLGAMING.com/assembly](https://levlgaming.com/assembly)

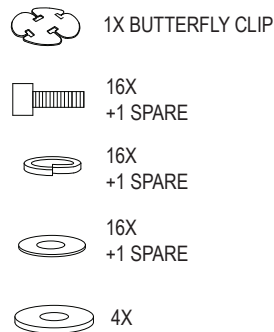
LEVEL
G A M I N G

CHAIR PARTS

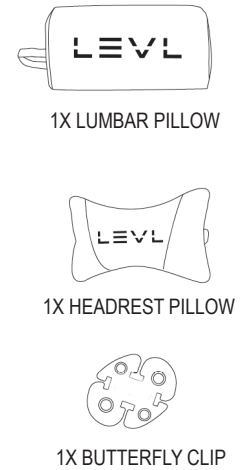


HARDWARE

HARDWARE IS ATTACHED TO CHAIR



ACCESSORIES



STEP 1

ATTACH WHEELS



STEP 2

INSTALL CYLINDER INTO BASE



STEP 3

ATTACH THE BACKREST TO THE SEAT
NOTE: DO NOT FULLY TIGHTEN UNTIL ALL 4 BOLTS HAVE BEEN ATTACHED



USE 1ST AND 3RD HOLE POSITIONS

USE 2ND AND 4TH HOLE POSITIONS (LEVER SIDE)

STEP 4

FIX THE PLASTIC COVERS ONTO THE SIDES OF THE BACKREST



CONTINUED ON BACK →

ALPHA SERIES INSTRUCTIONS

 LEVLGAMING.com/assembly

LEVL
G A M I N G

STEP 5

FIX THE MECHANISM TO THE BASE OF THE SEAT (SCREWS HAVE BEEN FIXED TO THE SEAT BASE PRIOR TO DELIVERY).



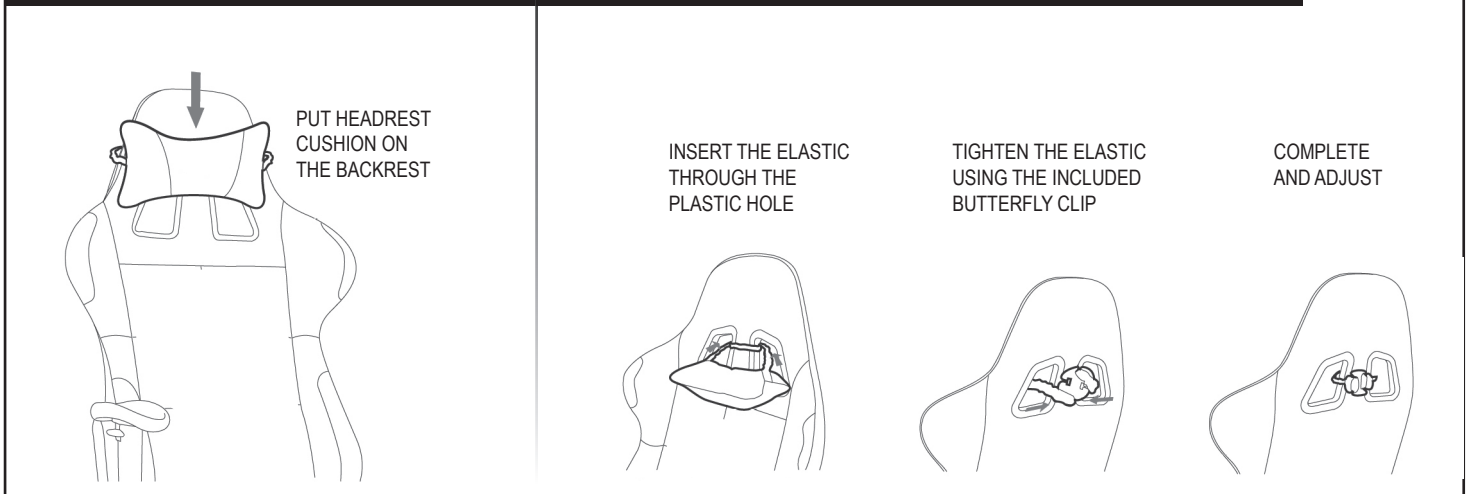
STEP 6

INSERT THE HYDRAULIC UNIT INTO THE OPENING OF THE MECHANISM



ATTACHING HEADREST

ATTACHING HEADREST OPTION 2



ATTACHING LUMBAR

